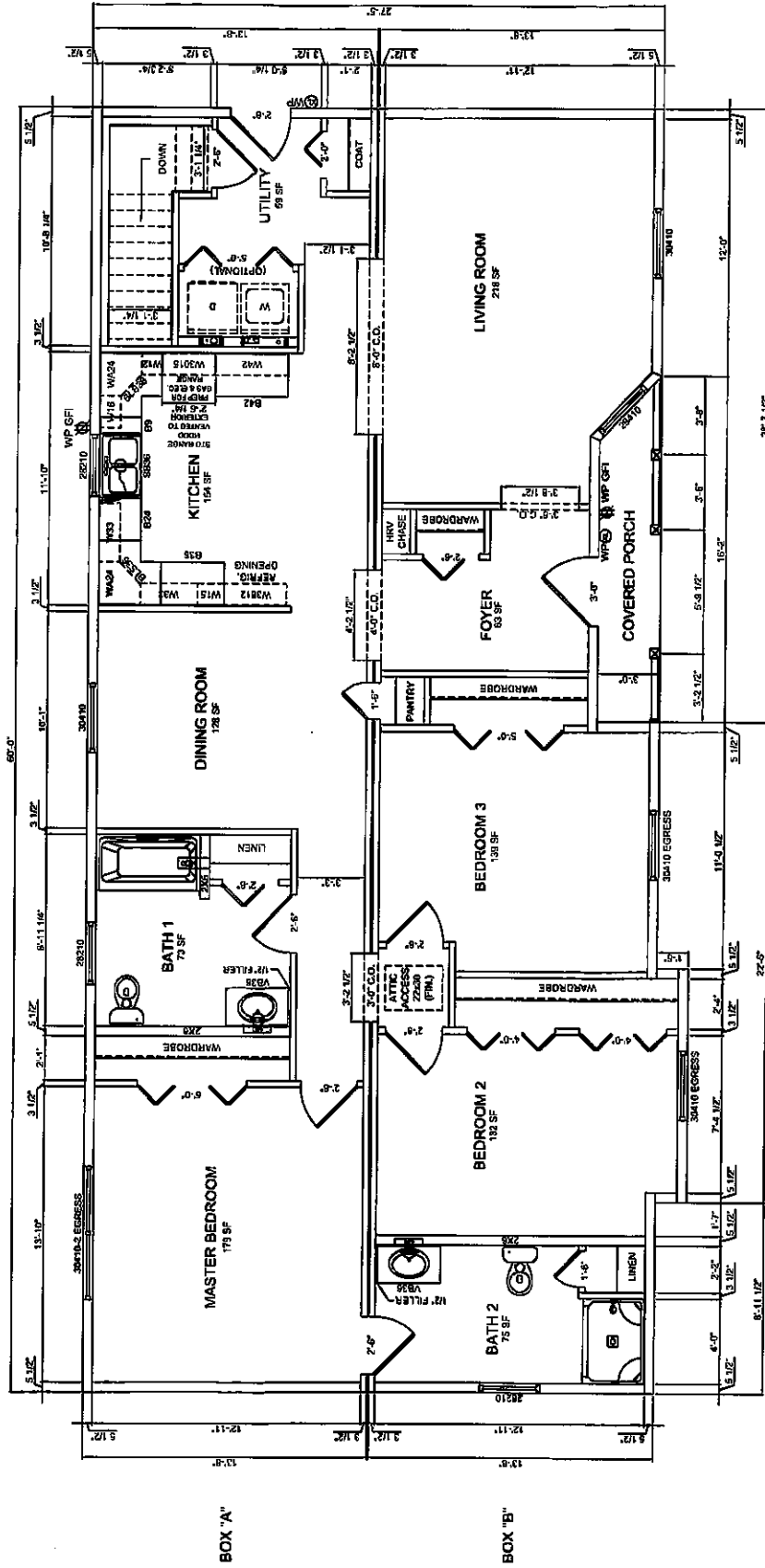


**FRONT ELEVATION**

NOTE:  
 - ELEVATIONS ARE FOR GRAPHIC REPRESENTATION ONLY. REFER TO WORK ORDER FORM FOR DETAILED INFORMATION.  
 - EXTERIOR STEPS, RAILINGS & LANDINGS ONSITE BY OTHER.

<p>3" V.T.R. BATH VENT</p>	<p>FRONT ELEVATION</p>	<p>Lincoln Ranch</p> <p>FILE NAME: SERIAL #:</p>	<p>SHEET # P2          SCALE: 1/4" = 1'-0"          DRAWN BY: KBS          DATE:</p>	<p>REVISIONS</p>		<p><b>KBS BUILDERS, INC.</b>          300 PARK STREET, SOUTH PARIS, ME 04281          PHONE: 207-739-2400 FAX: 207-739-2223</p>
----------------------------	------------------------	--	--	------------------	--	---



HARVEY WINDOWS

8'-0" CEILINGS

**KBS BUILDERS, INC.**  
 300 PARK STREET, SOUTH PARIS, ME 04281  
 PHONE: 207-739-2400 FAX: 207-739-2223



REVISIONS

**1st FLOOR PLAN**  
 SHEET # P3  
 SCALE: 3/16" = 1'-0"  
 DWN BY: KBS  
 DATE:

**Lincoln Ranch**  
 FILE NAME:  
 SERIAL #: