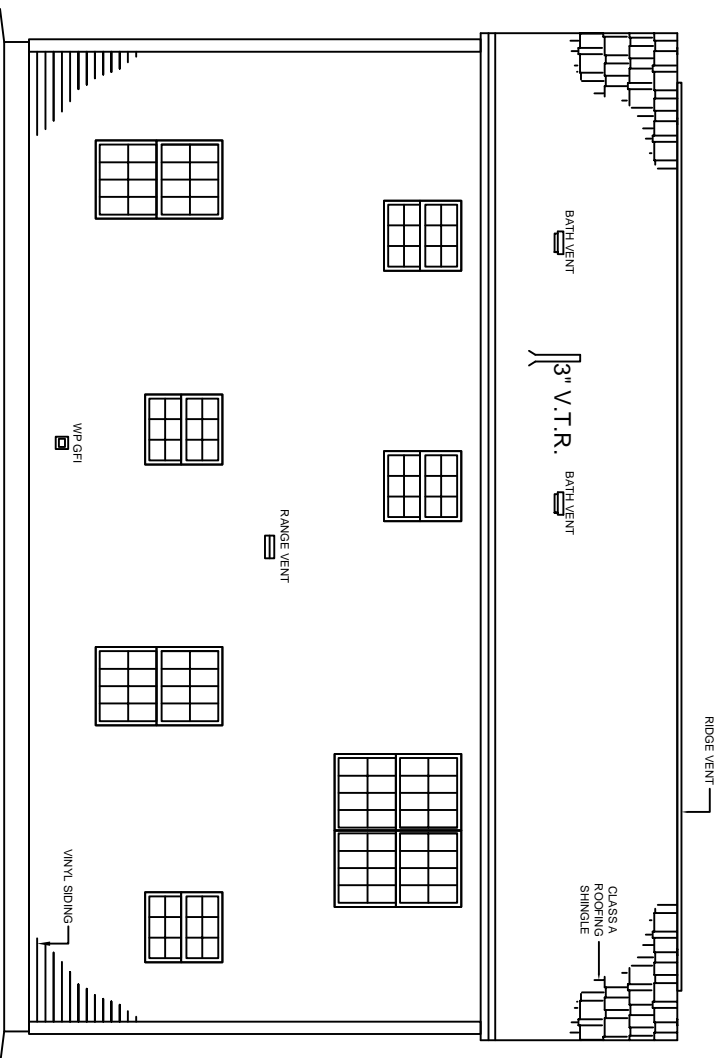


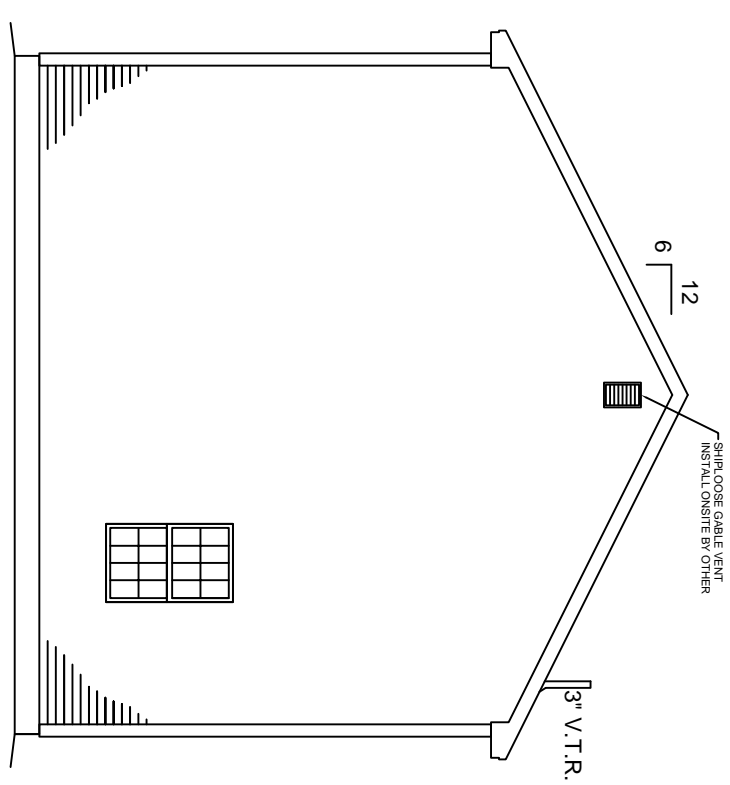
NOTE:
 - ELEVATIONS ARE FOR GRAPHIC REPRESENTATION ONLY. REFER TO WORK ORDER FORM FOR DETAILED INFORMATION.
 - EXTERIOR STEPS, RAILINGS & LANDINGS ONSITE BY OTHER.

FRONT ELEVATION

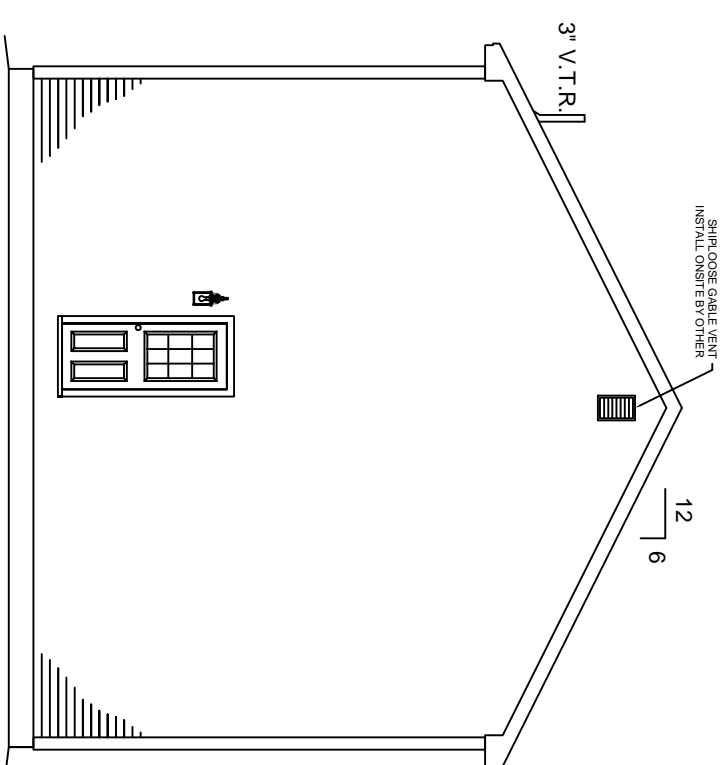
| | | | | | | |
|----------|---------|---------------------------------------|--|-----------|--|--|
| JOB NAME | BUILDER | HOUSE TYPE Berwick Colonial | FRONT ELEVATION SHEET # P2 SCALE: 1/4" = 1'-0" DWN BY: KBS DATE: | REVISIONS |  | KBS BUILDERS, INC. 300 PARK STREET, SOUTH PARIS, ME 04281 PHONE: 207-739-2400 FAX: 207-739-2223 |
|----------|---------|---------------------------------------|--|-----------|--|--|



REAR ELEVATION



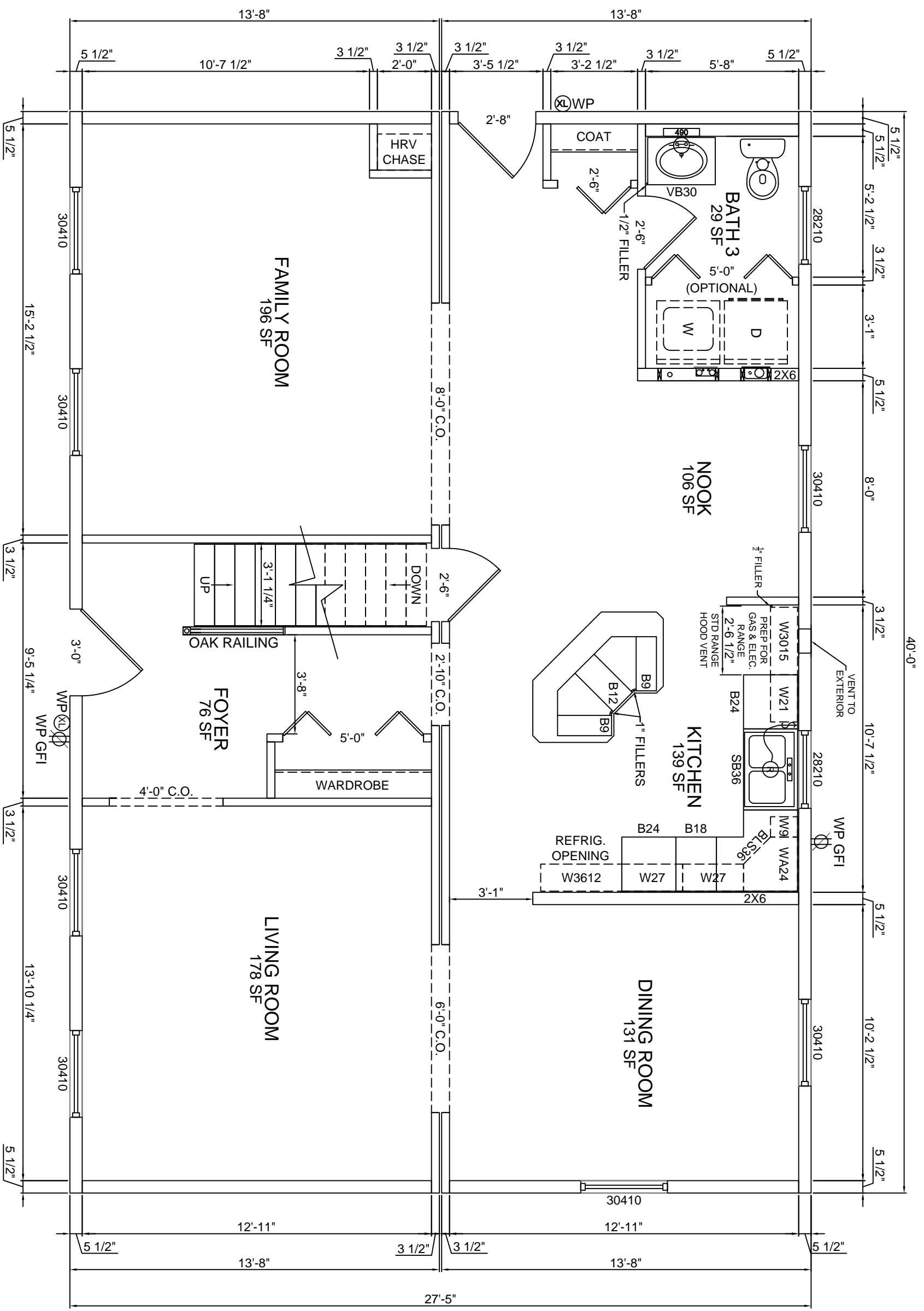
RIGHT ELEVATION



LEFT ELEVATION

NOTE:
 - ELEVATIONS ARE FOR GRAPHIC REPRESENTATION ONLY. REFER TO WORK ORDER FORM FOR DETAILED INFORMATION.
 - EXTERIOR STEPS, RAILINGS & LANDINGS ONSITE BY OTHER.

| | | | | | | |
|----------|---------|---------------------------------------|---|-----------|--|--|
| JOB NAME | BUILDER | HOUSE TYPE Berwick Colonial | EXTERIOR ELEVATIONS SHEET # P2a SCALE: 1/8" = 1'-0" DWN BY: KBS DATE: | REVISIONS |  | KBS BUILDERS, INC. 300 PARK STREET, SOUTH PARIS, ME 04281 PHONE: 207-739-2400 FAX: 207-739-2223 |
| | | FILE NAME: SERIAL #: | | | | |



HARVEY WINDOWS
8'-0" CEILINGS

JOB NAME
BUILDER

HOUSE TYPE
Berwick Colonial

FILE NAME:
SERIAL #:

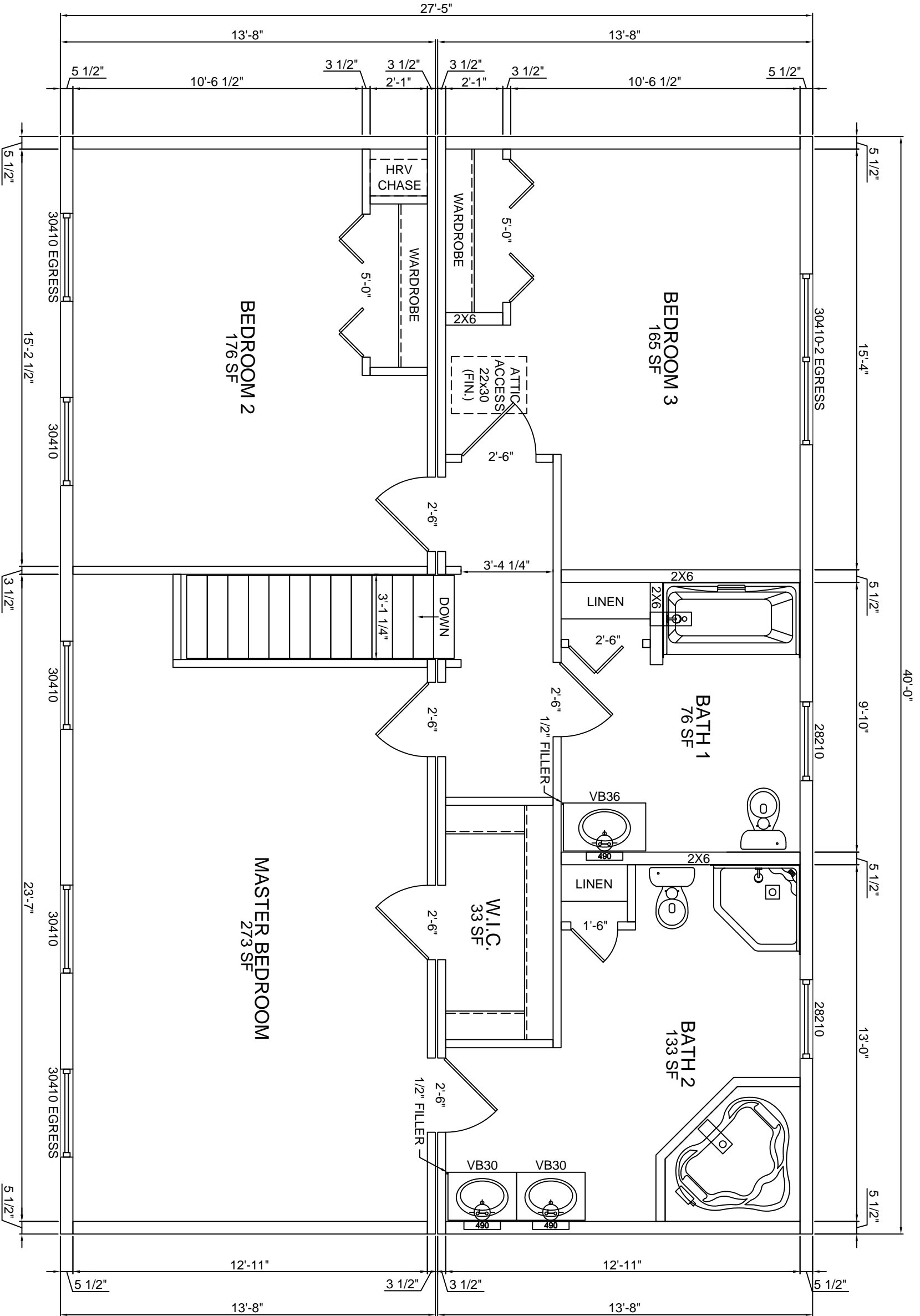
1st FLOOR PLAN
SHEET # P3
SCALE: 1/4" = 1'-0"
DWN BY: KBS
DATE:

REVISIONS

| | |
|--|--|
| | |
| | |
| | |
| | |



KBS BUILDERS, INC.
300 PARK STREET, SOUTH PARIS, ME 04281
PHONE: 207-739-2400 FAX: 207-739-2223



8'-0" CEILINGS

HARVEY WINDOWS

BOX "D"

BOX "C"

BEDROOM 2
176 SF

BEDROOM 3
165 SF

MASTER BEDROOM
273 SF

BATH 1
76 SF

BATH 2
133 SF

W.I.C.
33 SF

HOUSE TYPE
Berwick Colonial

FILE NAME:
SERIAL #:

2nd FLOOR PLAN

SHEET # P4
SCALE: 1/4" = 1'-0"
DWN BY: KBS
DATE:

REVISIONS

| NO. | DESCRIPTION |
|-----|-------------|
| | |
| | |
| | |



KBS BUILDERS, INC.

300 PARK STREET, SOUTH PARIS, ME 04281
PHONE: 207-739-2400 FAX: 207-739-2223

JOB NAME

BUILDER

HOUSE TYPE

2nd FLOOR PLAN

REVISIONS



KBS BUILDERS, INC.

300 PARK STREET, SOUTH PARIS, ME 04281
PHONE: 207-739-2400 FAX: 207-739-2223