
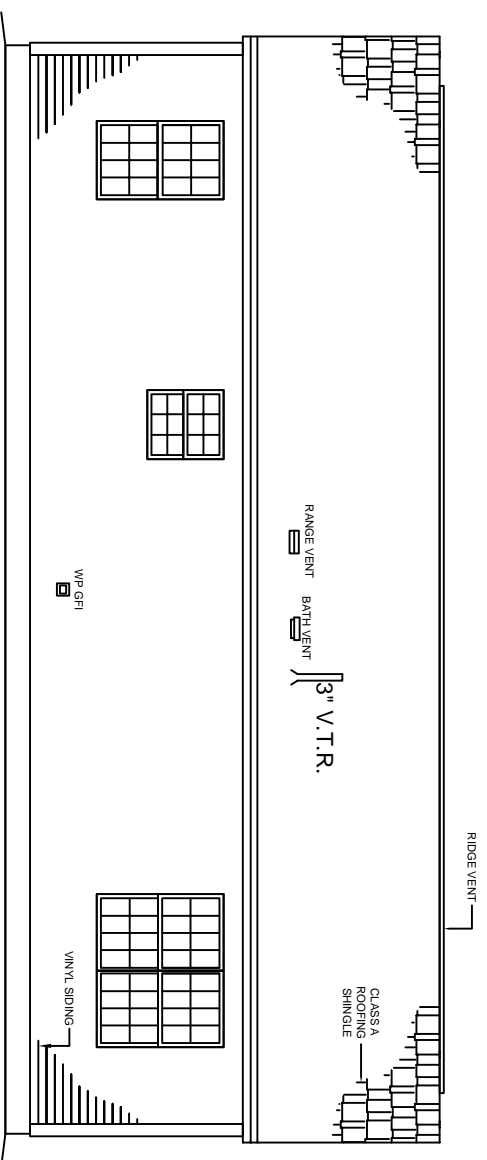


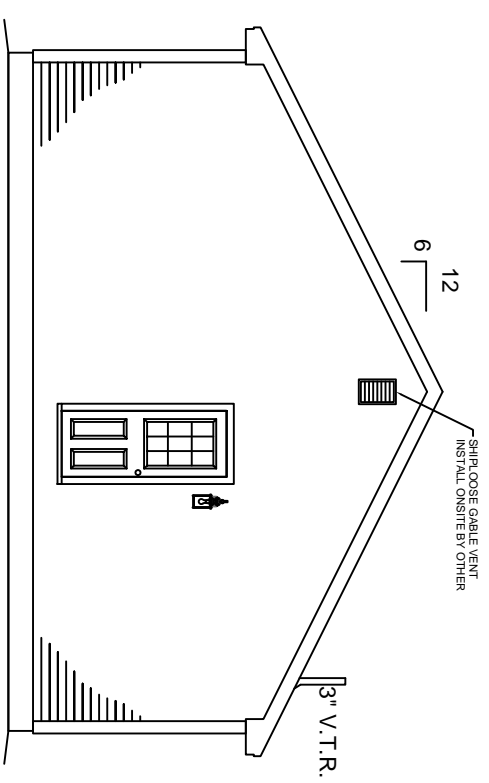
FRONT ELEVATION

NOTE:
 - ELEVATIONS ARE FOR GRAPHIC REPRESENTATION ONLY. REFER TO WORK ORDER FORM FOR DETAILED INFORMATION.
 - EXTERIOR STEPS, RAILINGS & LANDINGS ONSITE BY OTHER.

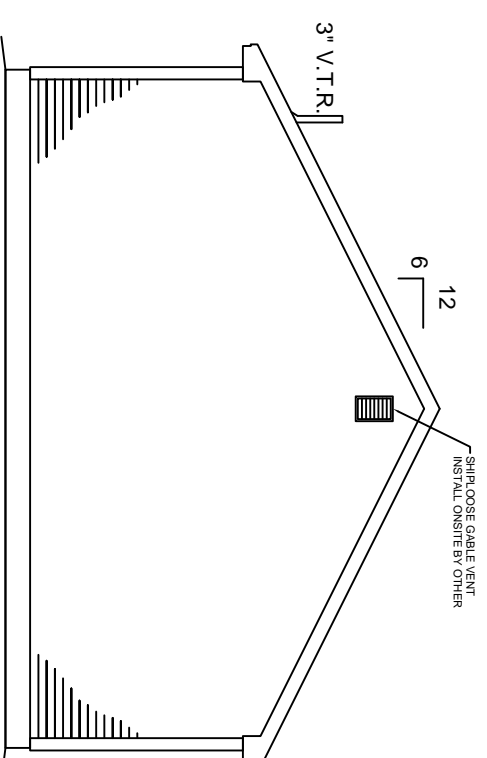
JOB NAME	BUILDER	HOUSE TYPE	FRONT ELEVATION	REVISIONS		<h2 style="margin: 0;">York Ranch</h2> <p style="font-size: 10px; margin: 0;">FILE NAME: SERIAL #:</p> <p style="font-size: 10px; margin: 0;">SHEET # P2 SCALE: 1/4" = 1'-0" DWN BY: KBS DATE:</p>	<h2 style="margin: 0;">KBS BUILDERS, INC.</h2> <p style="font-size: 10px; margin: 0;">300 PARK STREET, SOUTH PARIS, ME 04281 PHONE: 207-739-2400 FAX: 207-739-2223</p>
----------	---------	------------	-----------------	-----------	------------------------------------------------------------------------------------	--------------------------------------------------------------------------------------------------------------------------------------------------------------------------------------------------------------------	----------------------------------------------------------------------------------------------------------------------------------------------------------------------------



REAR ELEVATION



RIGHT ELEVATION



LEFT ELEVATION

NOTE:
 - ELEVATIONS ARE FOR GRAPHIC REPRESENTATION ONLY. REFER TO WORK ORDER FORM FOR DETAILED INFORMATION.
 - EXTERIOR STEPS, RAILINGS & LANDINGS ON SITE BY OTHER.

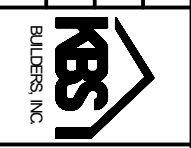
JOB NAME: YORK RANCH
 BUILDER: YORK RANCH

HOUSE TYPE: YORK RANCH

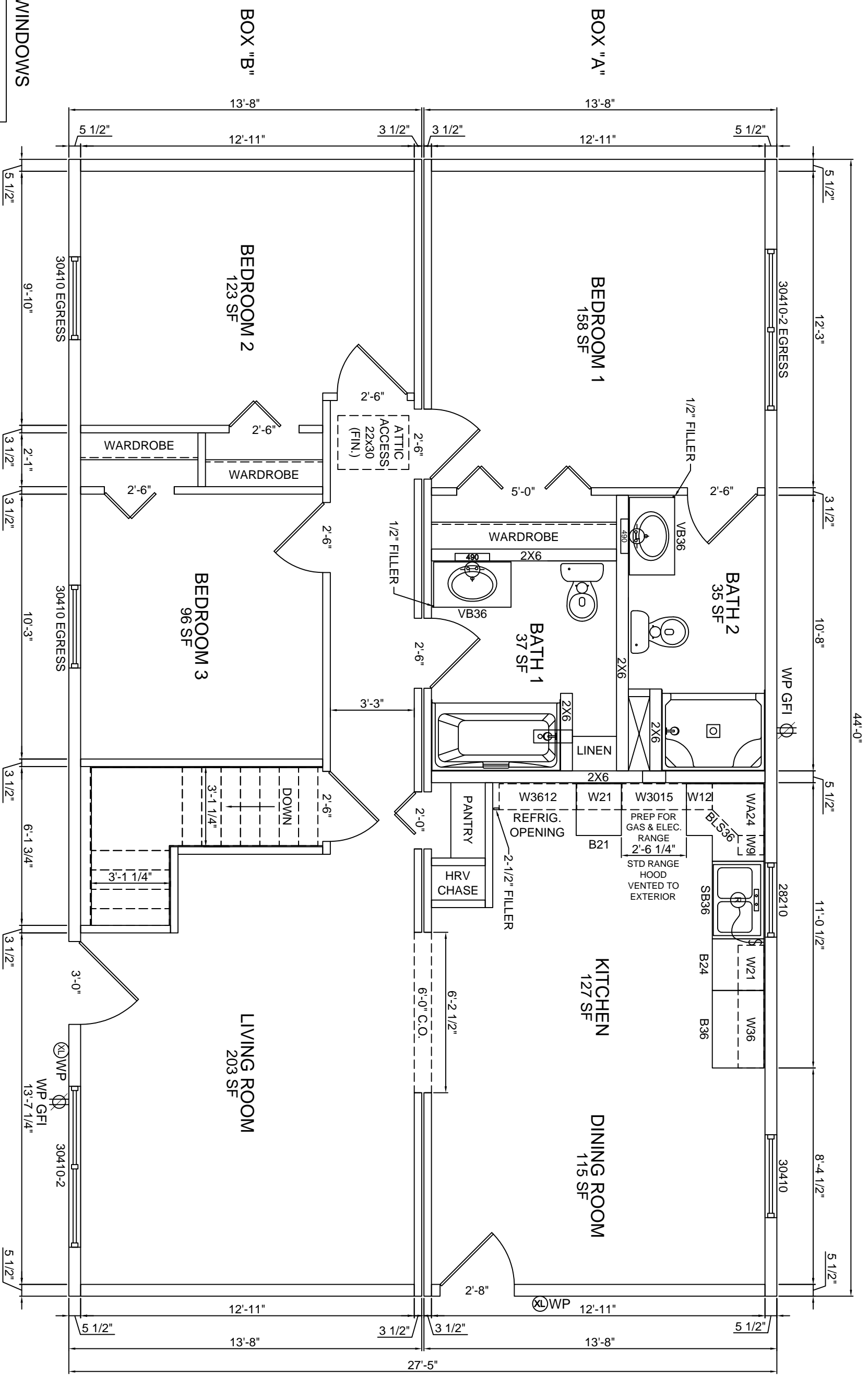
FILE NAME: YORK RANCH
 SERIAL #: YORK RANCH

EXTERIOR ELEVATIONS
 SHEET # P2a
 SCALE: 1/8" = 1'-0"
 DWN BY: KBS
 DATE:

REVISIONS



KBS BUILDERS, INC.
 300 PARK STREET, SOUTH PARIS, ME 04281
 PHONE: 207-739-2400 FAX: 207-739-2223



HARVEY WINDOWS
8'-0" CEILINGS

JOB NAME

BUILDER

HOUSE TYPE

York Ranch

FILE NAME:
SERIAL #:

1st FLOOR PLAN

SHEET # P3
SCALE: 1/4" = 1'-0"
DWN BY: KBS
DATE:

REVISIONS

NO.	DESCRIPTION



KBS BUILDERS, INC.
300 PARK STREET, SOUTH PARIS, ME 04281
PHONE: 207-739-2400 FAX: 207-739-2223