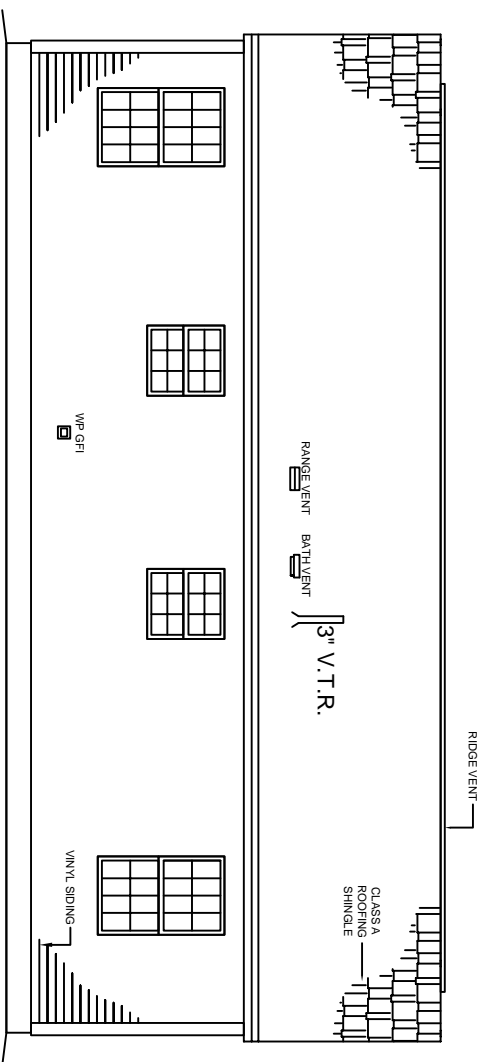


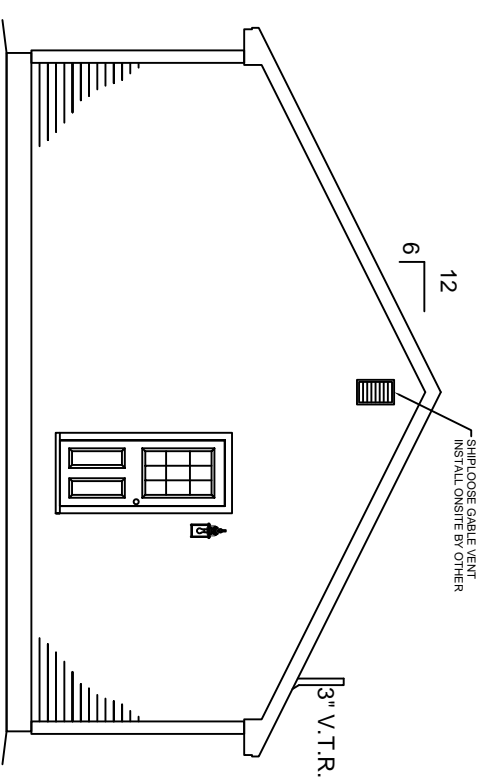
FRONT ELEVATION

NOTE:
 - ELEVATIONS ARE FOR GRAPHIC REPRESENTATION ONLY. REFER TO WORK ORDER FORM FOR DETAILED INFORMATION.
 - EXTERIOR STEPS, RAILINGS & LANDINGS ONSITE BY OTHER.

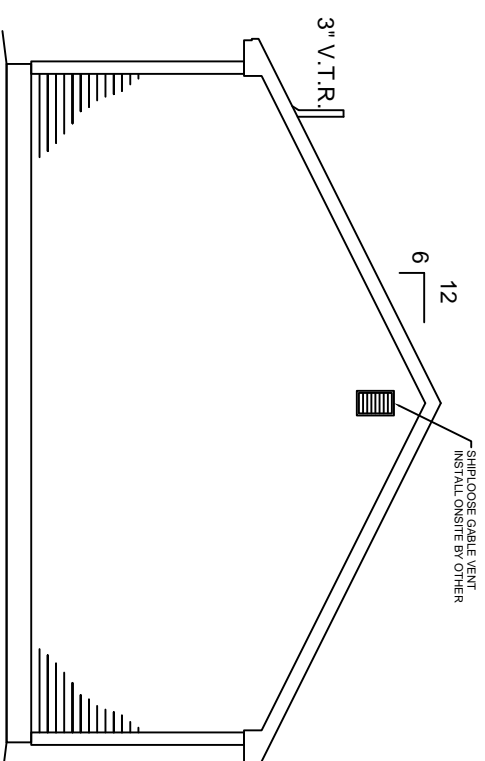
<small>JOB NAME</small>	<small>BUILDER</small>	<small>HOUSE TYPE</small>	<small>FRONT ELEVATION</small>	<small>REVISIONS</small>		KBS BUILDERS, INC.
		Aroostook Ranch	SHEET # P2 SCALE: 1/4" = 1'-0" DWN BY: KBS DATE:			300 PARK STREET, SOUTH PARIS, ME 04281 PHONE: 207-739-2400 FAX: 207-739-2223



REAR ELEVATION



RIGHT ELEVATION



LEFT ELEVATION

NOTE:
 - ELEVATIONS ARE FOR GRAPHIC REPRESENTATION ONLY. REFER TO WORK ORDER FORM FOR DETAILED INFORMATION.
 - EXTERIOR STEPS, RAILINGS & LANDINGS ONSITE BY OTHER.

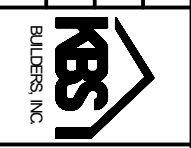
JOB NAME: **ARROOSTOCK RANCH**

HOUSE TYPE: **ARROOSTOCK RANCH**

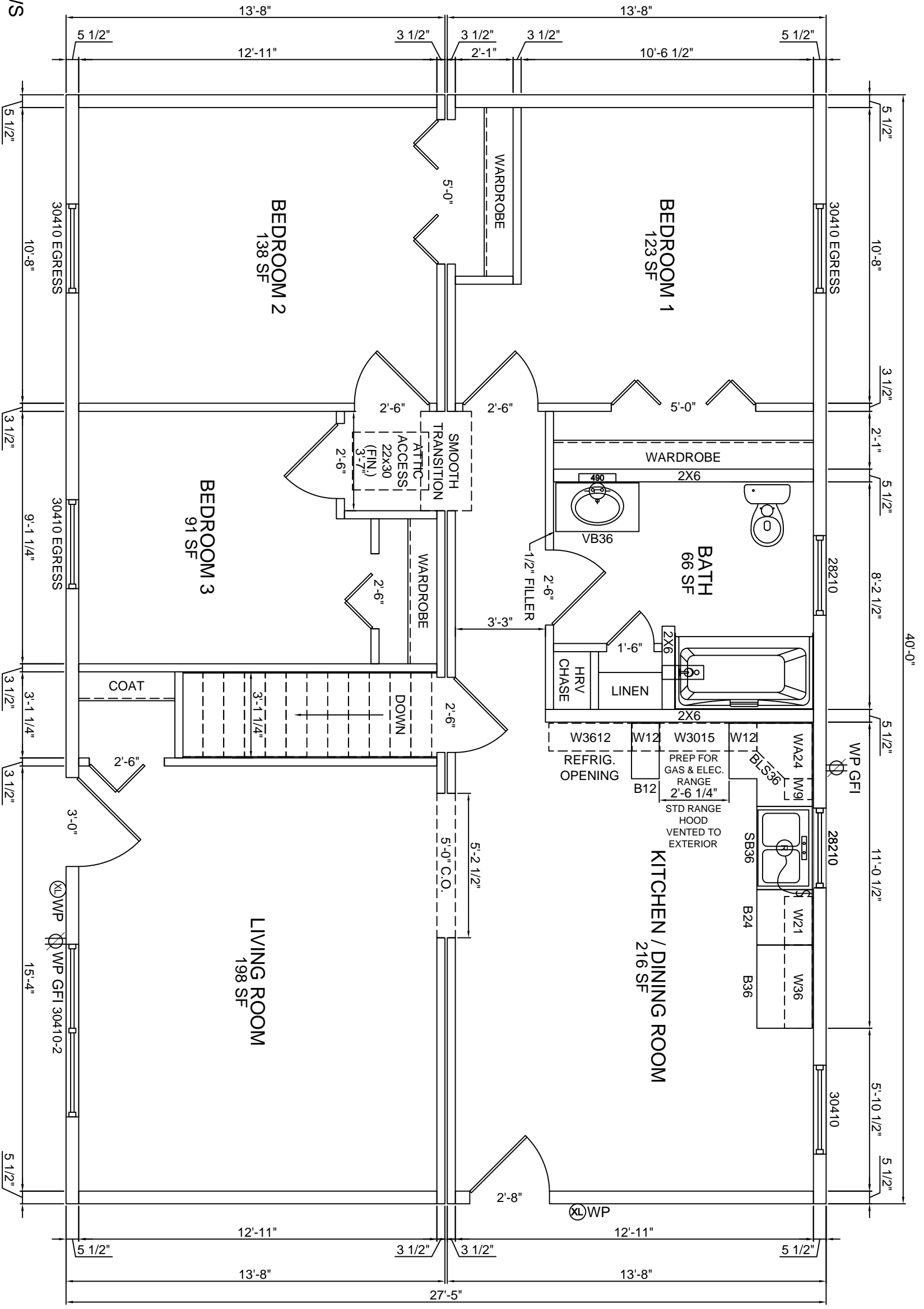
FILE NAME: **ARROOSTOCK RANCH**
 SERIAL #:

EXTERIOR ELEVATIONS
 SHEET # **P2a**
 SCALE: **1/8" = 1'-0"**
 DWN BY: **KBS**
 DATE:

REVISIONS



KBS BUILDERS, INC.
 300 PARK STREET, SOUTH PARIS, ME 04281
 PHONE: 207-739-2400 FAX: 207-739-2223



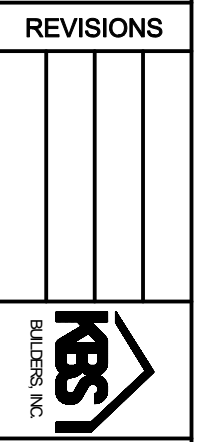
8'-0" CEILINGS
HARVEY WINDOWS

JOB NAME: **AROOSTOOK RANCH**
BUILDER: **KBS BUILDERS, INC.**

HOUSE TYPE: **AROOSTOOK RANCH**
FILE NAME: **AROOSTOOK RANCH**
SERIAL #: **AROOSTOOK RANCH**

1st FLOOR PLAN
SHEET # **P3**
SCALE: **1/4" = 1'-0"**
DWN BY: **KBS**
DATE: **11-11-2011**

REVISIONS



KBS BUILDERS, INC.
300 PARK STREET, SOUTH PARIS, ME 04281
PHONE: 207-739-2400 FAX: 207-739-2223