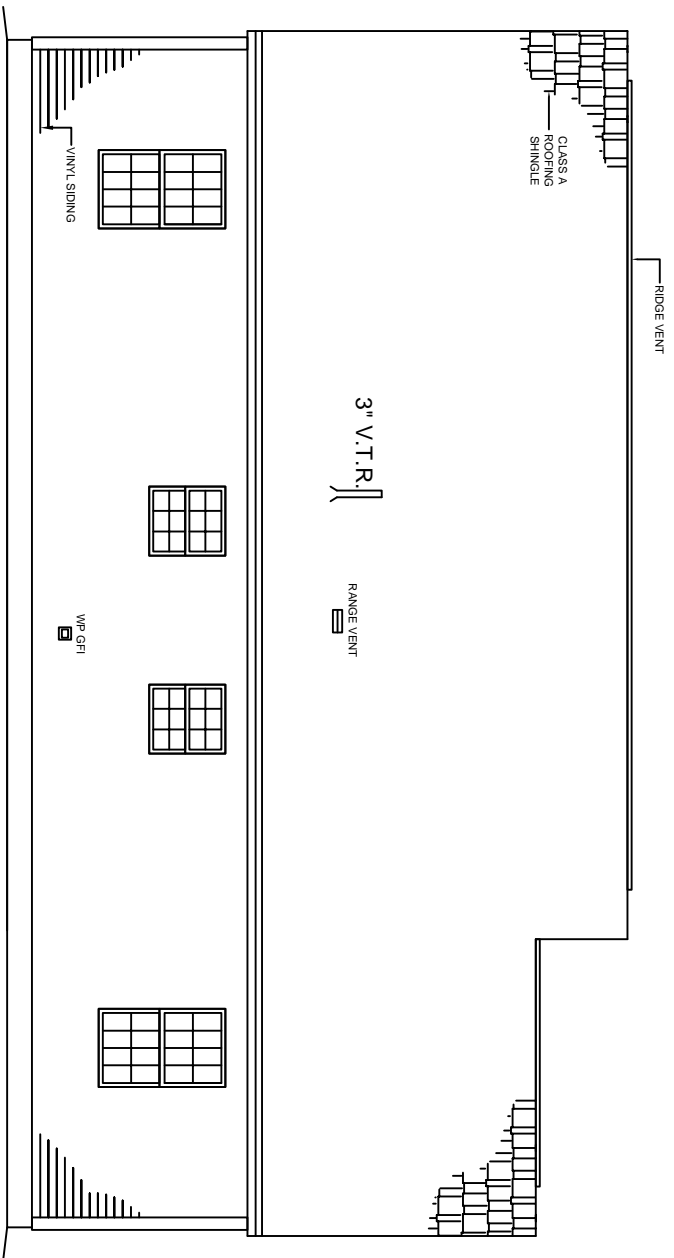


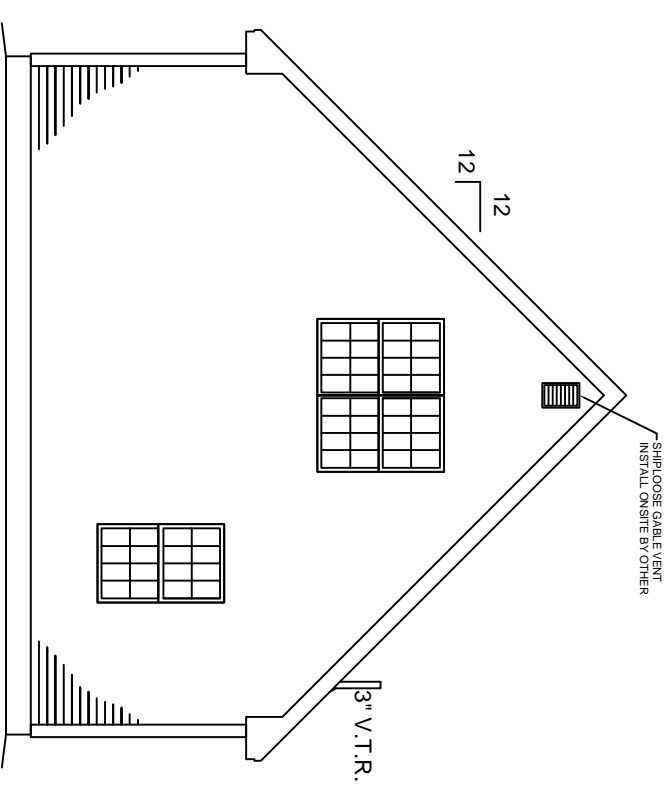
# FRONT ELEVATION

NOTE:  
 - ELEVATIONS ARE FOR GRAPHIC REPRESENTATION ONLY. REFER TO WORK ORDER FORM FOR DETAILED INFORMATION.  
 - EXTERIOR STEPS, RAILINGS & LANDINGS ONSITE BY OTHER.

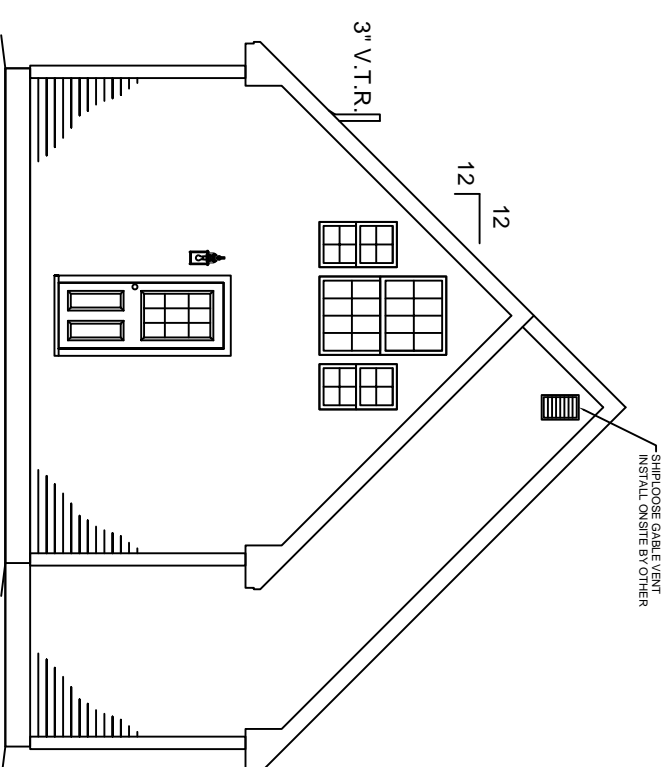
JOB NAME	BUILDER	HOUSE TYPE	FRONT ELEVATION	REVISIONS		<b>KBS BUILDERS, INC.</b> 300 PARK STREET, SOUTH PARIS, ME 04281 PHONE: 207-739-2400 FAX: 207-739-2223
		<b>Topsham Cape</b>	SHEET # P2 SCALE: 1/4" = 1'-0" DWN BY: KBS DATE:			
		FILE NAME: SERIAL #:				



**REAR ELEVATION**



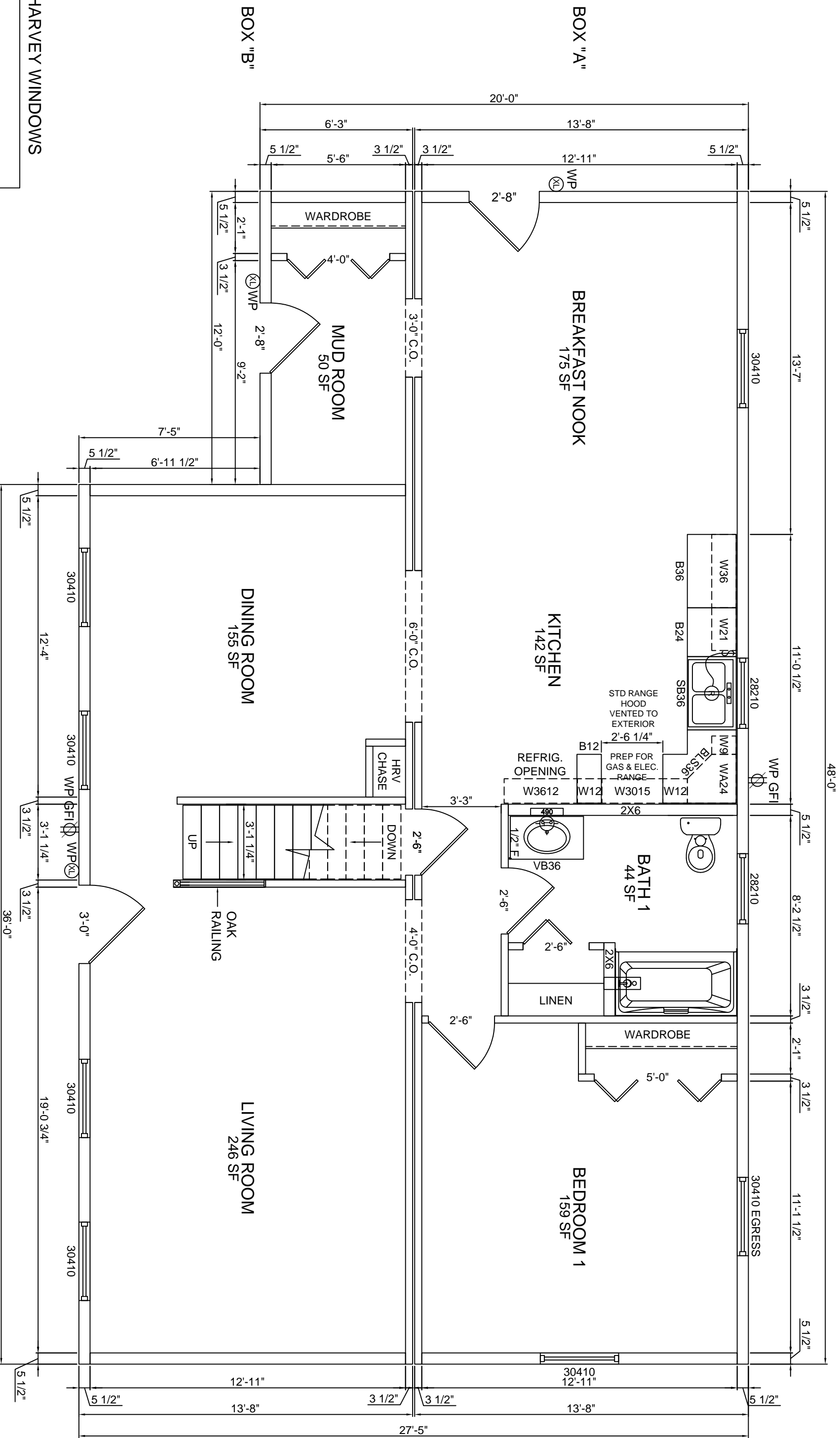
**RIGHT ELEVATION**



**LEFT ELEVATION**

**NOTE:**  
 - ELEVATIONS ARE FOR GRAPHIC REPRESENTATION ONLY. REFER TO WORK ORDER FORM FOR DETAILED INFORMATION.  
 - EXTERIOR STEPS, RAILINGS & LANDINGS ON-SITE BY OTHER.

JOB NAME	BUILDER	HOUSE TYPE <b>Topsham Cape</b>	EXTERIOR ELEVATIONS SHEET # P2a SCALE: 1/8" = 1'-0" DWN BY: KBS DATE:	REVISIONS		<b>KBS BUILDERS, INC.</b> 300 PARK STREET, SOUTH PARIS, ME 04281 PHONE: 207-739-2400 FAX: 207-739-2223



8'-0" CEILINGS

HARVEY WINDOWS

**HOUSE TYPE**  
**Topsham Cape**

**1st FLOOR PLAN**

REVISIONS

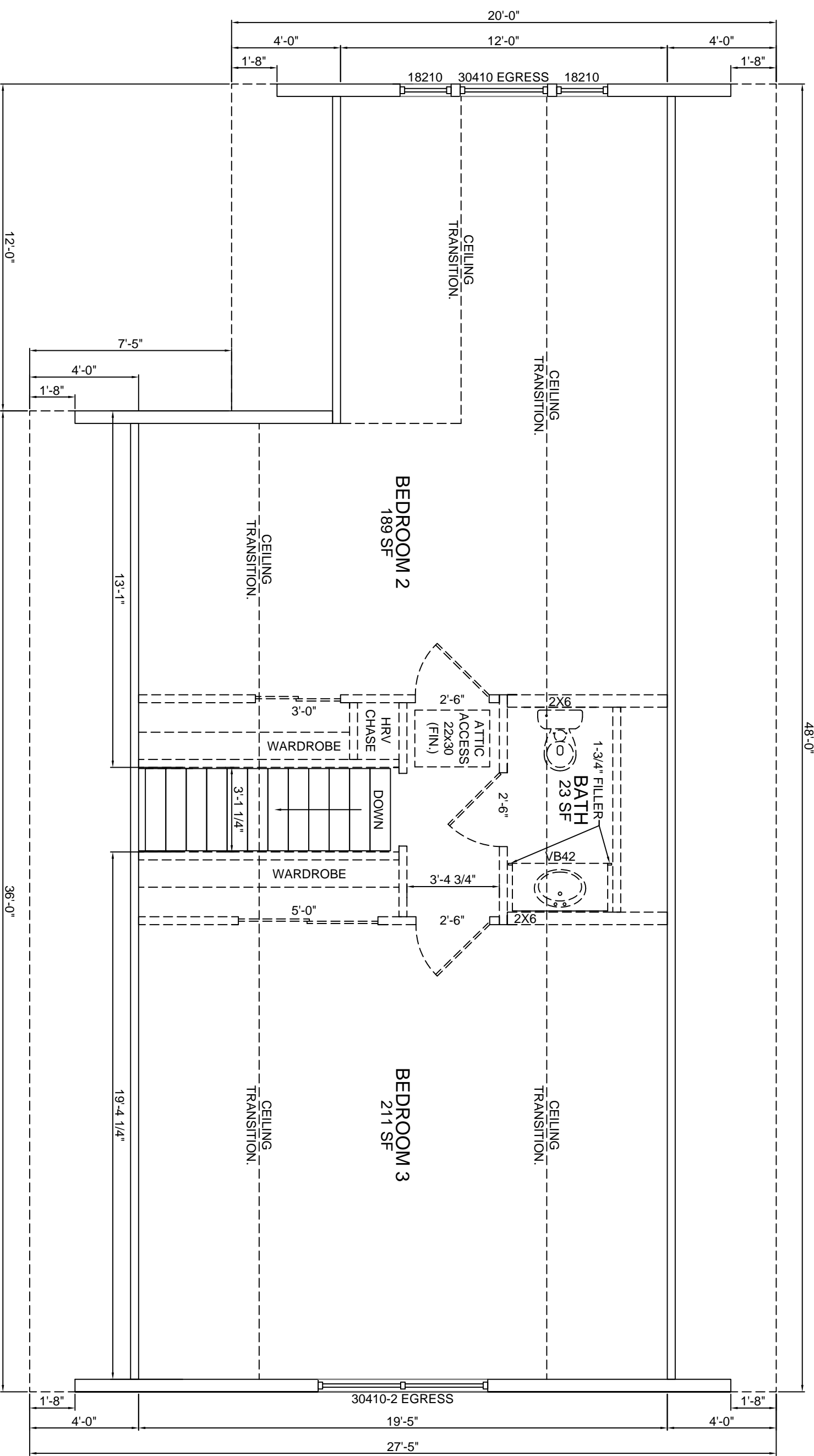


**KBS BUILDERS, INC.**  
 300 PARK STREET, SOUTH PARIS, ME 04281  
 PHONE: 207-739-2400 FAX: 207-739-2223


FILE NAME:  
 SERIAL #:

SHEET # P3  
 SCALE: 1/4" = 1'-0"  
 DWN BY: KBS  
 DATE:

JOB NAME: BUILDER:



HARVEY WINDOWS  
8'-0" CEILINGS

JOB NAME		BOULDER		HOUSE TYPE	<b>Topsham Cape</b>	2nd FLOOR PLAN		REVISIONS			<b>KBS BUILDERS, INC.</b> 300 PARK STREET, SOUTH PARIS, ME 04281 PHONE: 207-739-2400 FAX: 207-739-2223
				FILE NAME:		SHEET #	P4				
				SERIAL #:		SCALE:	1/4" = 1'-0"				
						DWN BY:	KBS				
						DATE:					