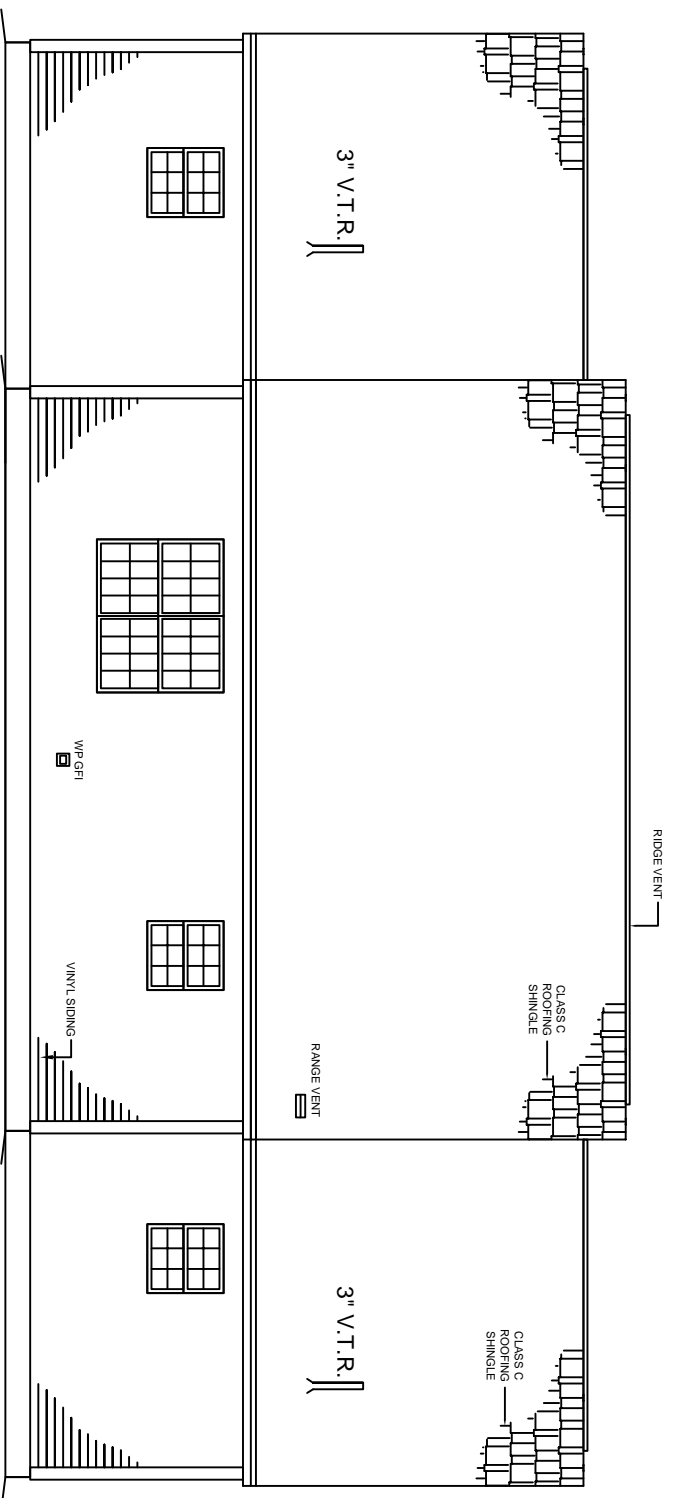


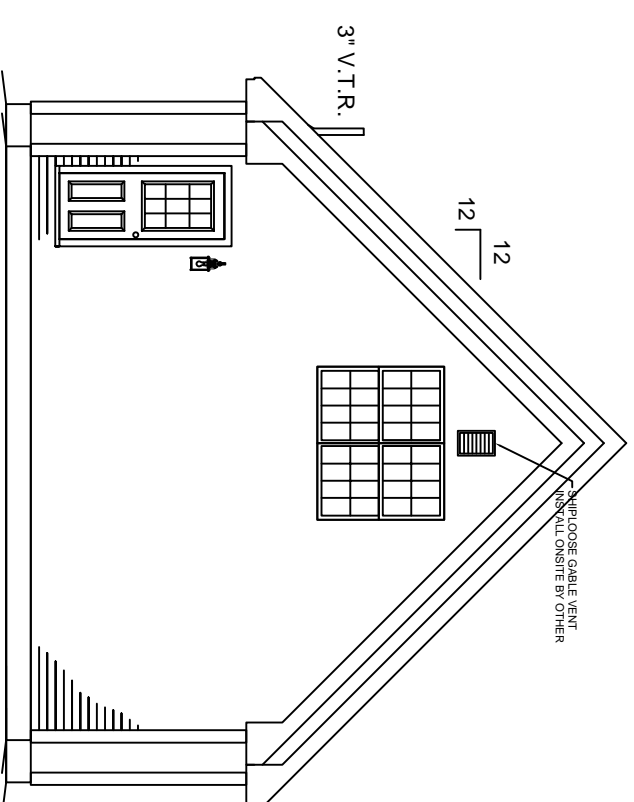
**FRONT ELEVATION**

NOTE:  
 - ELEVATIONS ARE FOR GRAPHIC REPRESENTATION ONLY. REFER TO WORK ORDER FORM FOR DETAILED INFORMATION.  
 - EXTERIOR STEPS, RAILINGS & LANDINGS ONSITE BY OTHER.

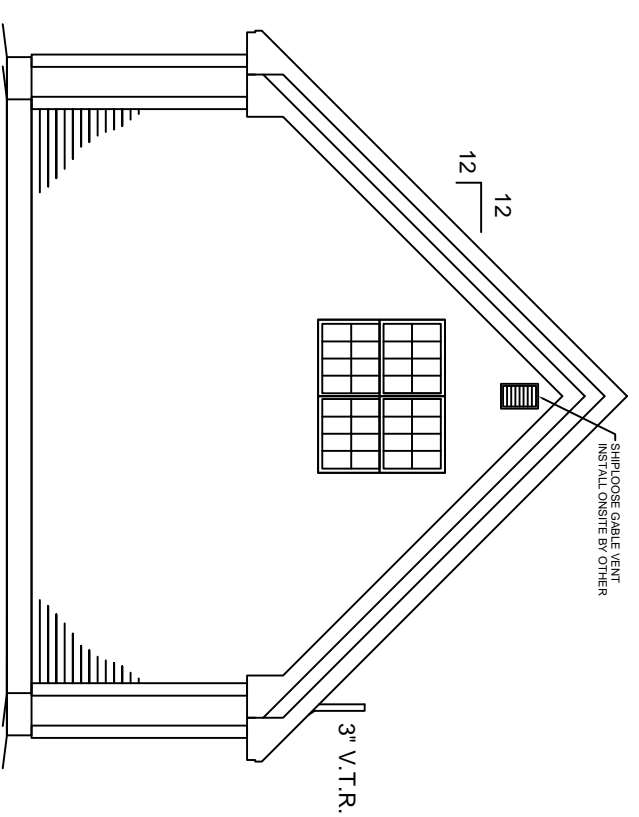
JOB NAME	BUILDER	HOUSE TYPE	FRONT ELEVATION	REVISIONS	KBS BUILDERS, INC.	<b>KBS BUILDERS, INC.</b> 300 PARK STREET, SOUTH PARIS, ME 04281 PHONE: 207-739-2400 FAX: 207-739-2223
		<b>Falmouth Cape</b>	SHEET # P2 SCALE: 3/16" = 1'-0" DWN BY: KBS DATE:		<b>KBS</b>	
		FILE NAME: SERIAL #:				



**REAR ELEVATION**



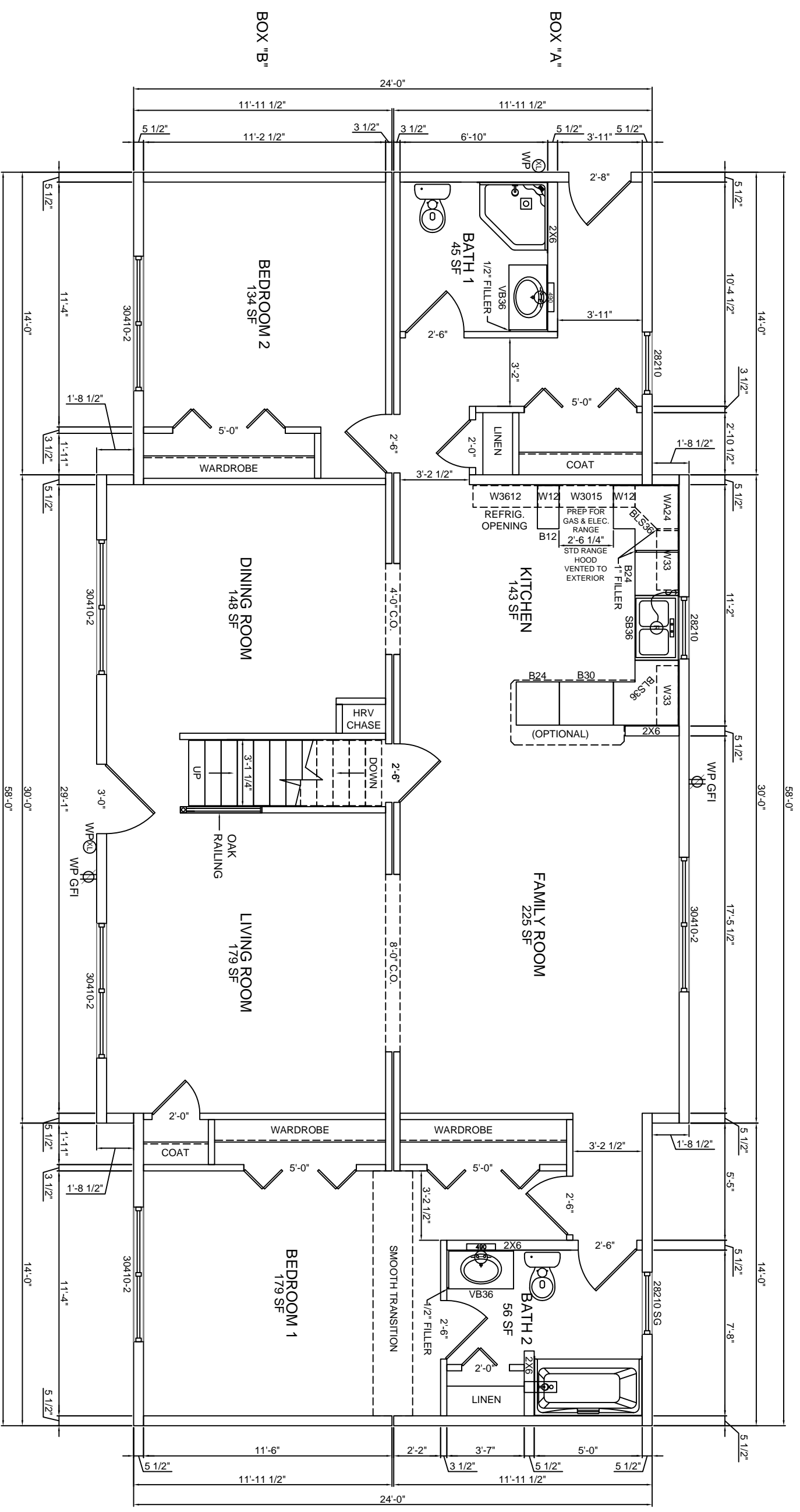
**LEFT ELEVATION**



**RIGHT ELEVATION**

**NOTE:**  
 - ELEVATIONS ARE FOR GRAPHIC REPRESENTATION ONLY. REFER TO WORK ORDER FORM FOR DETAILED INFORMATION.  
 - EXTERIOR STEPS, RAILINGS & LANDINGS ON-SITE BY OTHER.

<small>JOB NAME</small>	<small>BUILDER</small>	<small>HOUSE TYPE</small> <b>Falmouth Cape</b>	<small>EXTERIOR ELEVATIONS</small>	<small>REVISIONS</small>		<b>KBS BUILDERS, INC.</b> 300 PARK STREET, SOUTH PARIS, ME 04281 PHONE: 207-739-2400 FAX: 207-739-2223
		FILE NAME: SERIAL #:	SHEET # SCALE: DWN BY: DATE:			
			P2a 1/8" = 1'-0" KBS			



HARVEY WINDOWS  
8'-0" CEILINGS

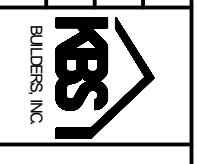
JOB NAME  
BUILDER

HOUSE TYPE  
**Falmouth Cape**

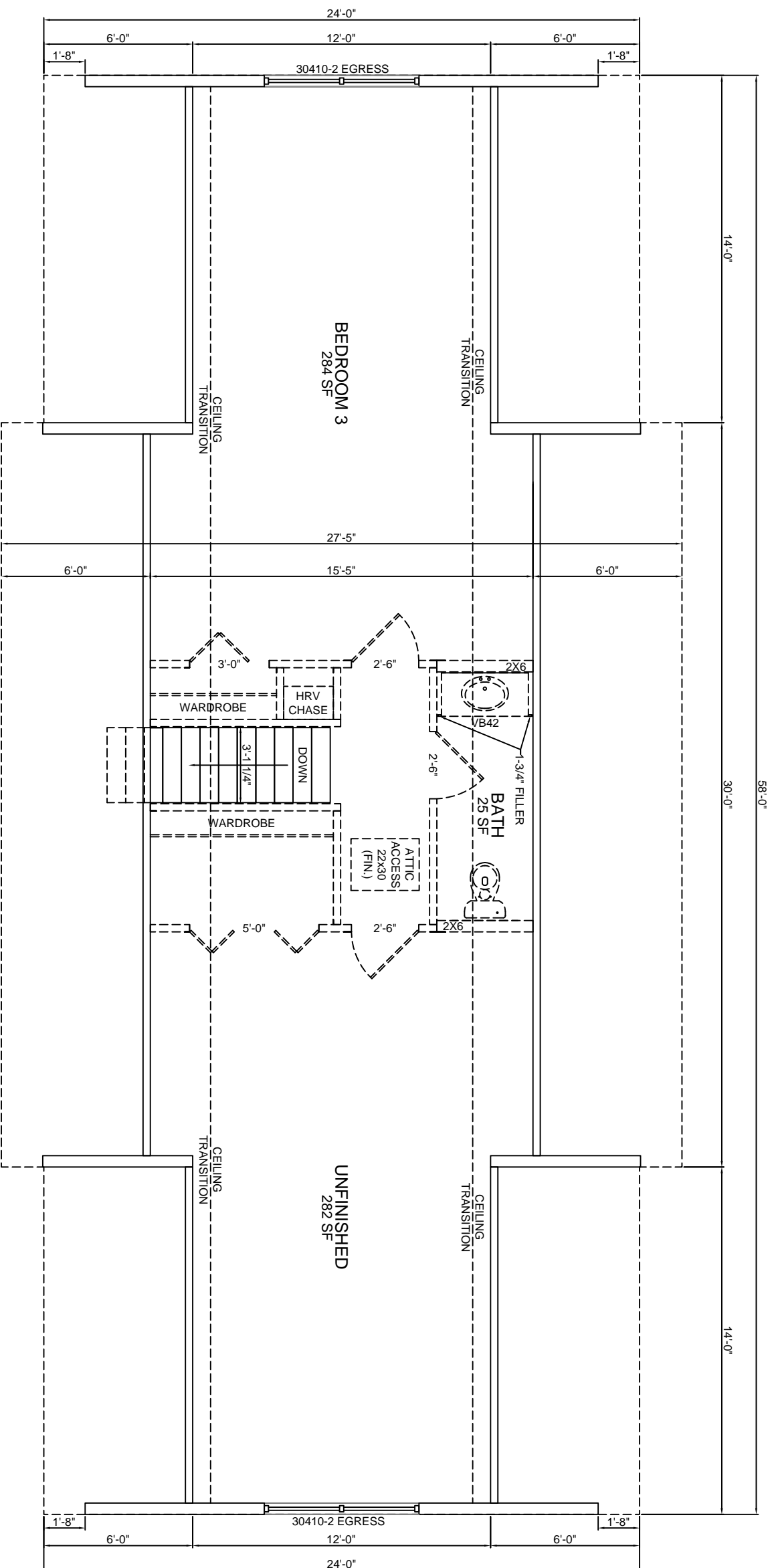
FILE NAME:  
SERIAL #:

1st FLOOR PLAN  
SHEET # P3  
SCALE: 3/16" = 1'-0"  
DWN BY: KBS  
DATE:

REVISIONS

**KBS BUILDERS, INC.**  
300 PARK STREET, SOUTH PARIS, ME 04281  
PHONE: 207-739-2400 FAX: 207-739-2223



HARVEY WINDOWS

8'-0" CEILINGS

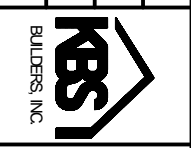
JOB NAME

BUILDER

HOUSE TYPE  
**Falmouth Cape**

2nd FLOOR PLAN  
 SHEET # P4  
 SCALE: 3/16" = 1'-0"  
 DWN BY: KBS  
 DATE:

REVISIONS

**KBS BUILDERS, INC.**  
 300 PARK STREET, SOUTH PARIS, ME 04281  
 PHONE: 207-739-2400 FAX: 207-739-2223