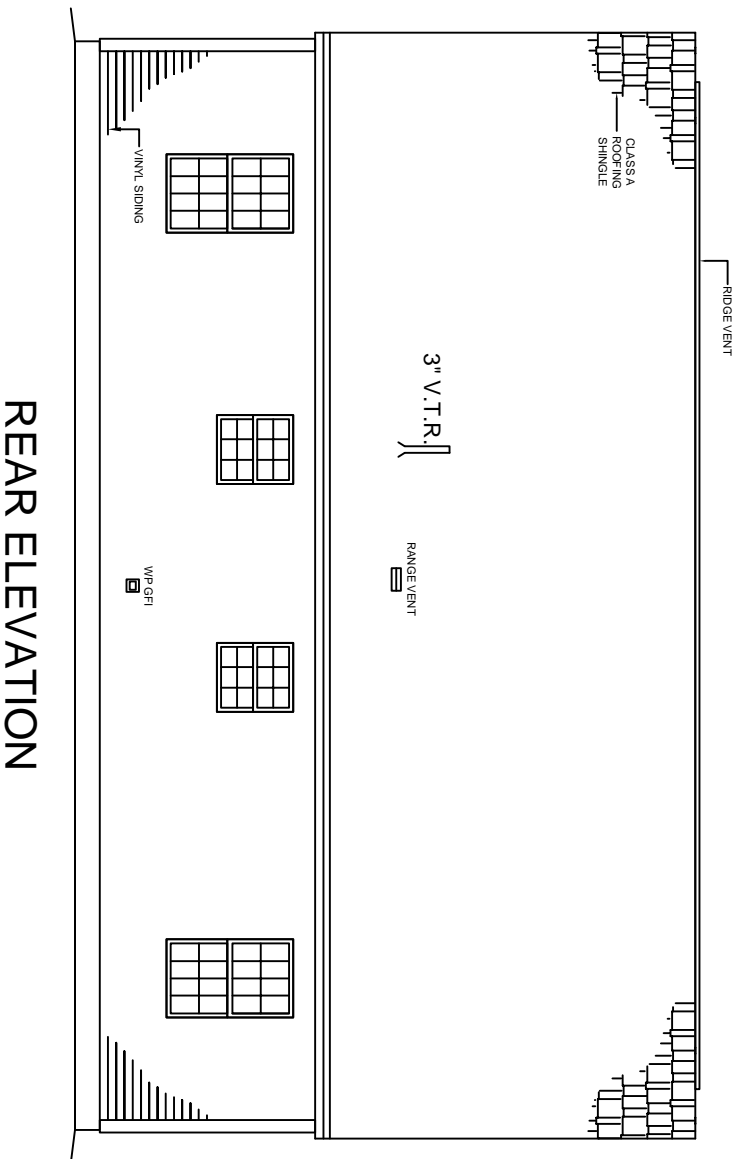


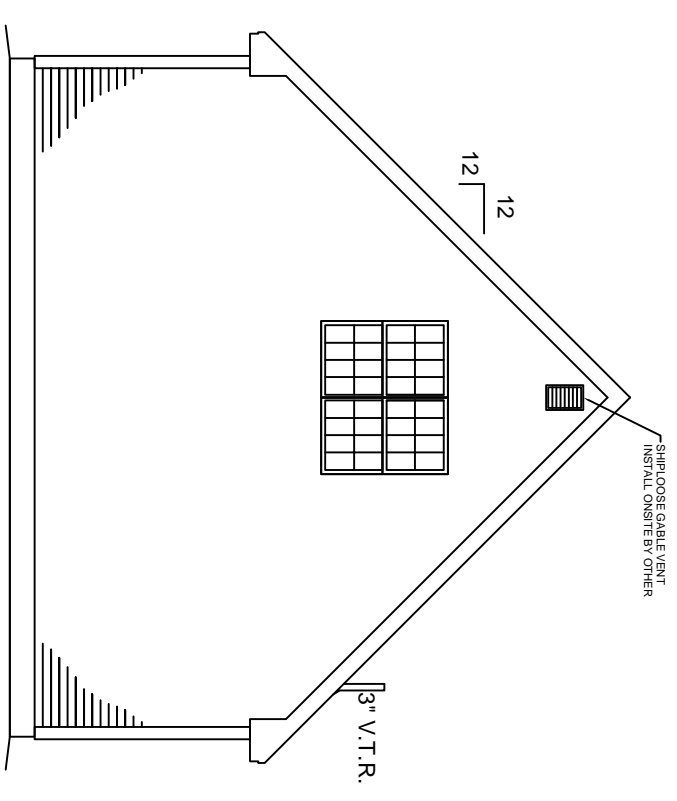
NOTE:  
 - ELEVATIONS ARE FOR GRAPHIC REPRESENTATION ONLY. REFER TO WORK ORDER FORM FOR DETAILED INFORMATION.  
 - EXTERIOR STEPS, RAILINGS & LANDINGS ONSITE BY OTHER.

# FRONT ELEVATION

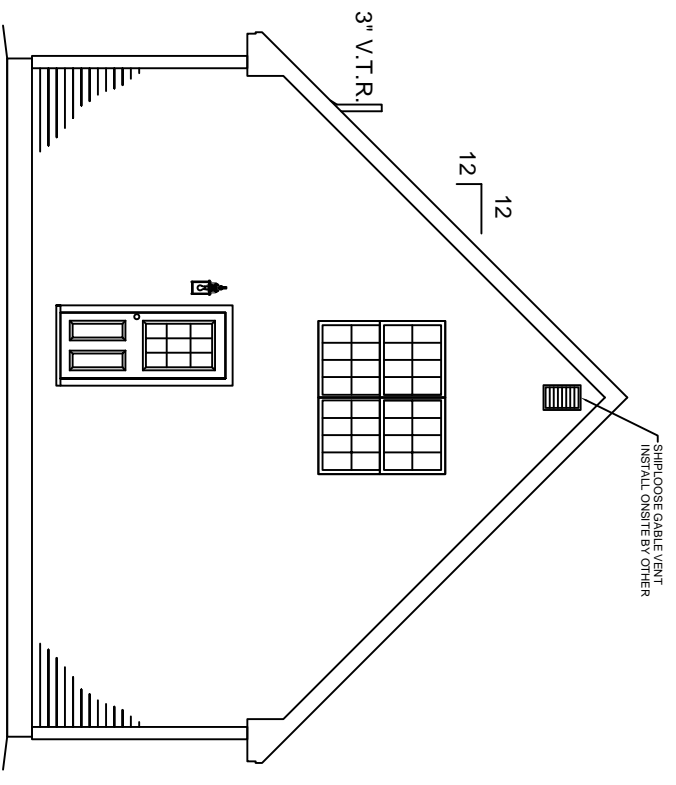
JOB NAME	BUILDER	HOUSE TYPE	FRONT ELEVATION	REVISIONS		<h2 style="margin: 0;">KBS BUILDERS, INC.</h2> <p style="margin: 0; font-size: 10px;">300 PARK STREET, SOUTH PARIS, ME 04281          PHONE: 207-739-2400 FAX: 207-739-2223</p>
		Hancock Cape	SHEET # P2 SCALE: 1/4" = 1'-0" DWN BY: KBS DATE:			
		FILE NAME: SERIAL #:				



**REAR ELEVATION**



**RIGHT ELEVATION**



**LEFT ELEVATION**

**NOTE:**  
 - ELEVATIONS ARE FOR GRAPHIC REPRESENTATION ONLY. REFER TO WORK ORDER FORM FOR DETAILED INFORMATION.  
 - EXTERIOR STEPS, RAILINGS & LANDINGS ONSITE BY OTHER.

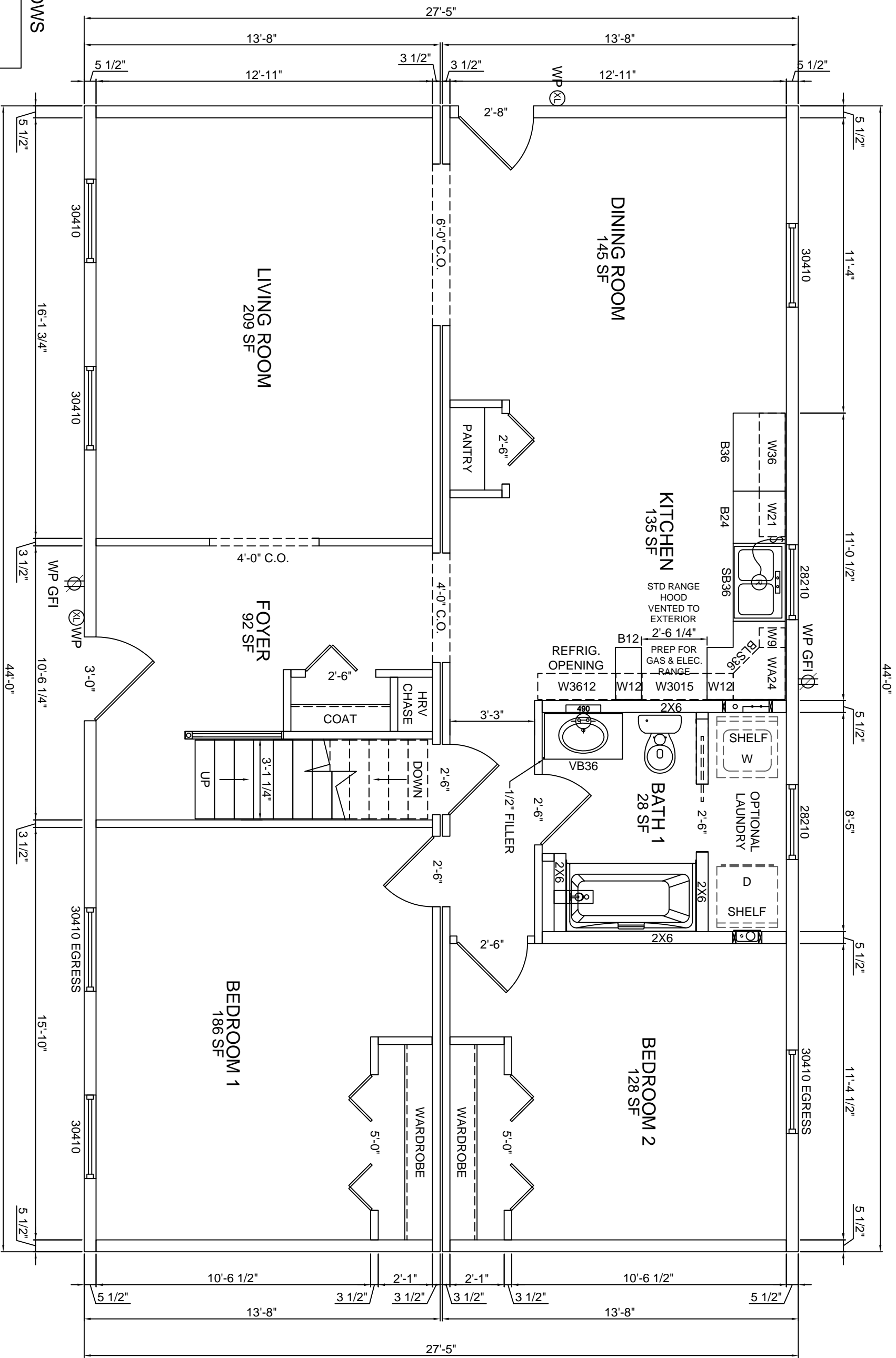
JOB NAME	BUILDER	HOUSE TYPE	<p><b>Hancock Cape</b></p> <p>FILE NAME: SERIAL #:</p>
----------	---------	------------	--

EXTERIOR ELEVATIONS
SHEET # P2a SCALE: 1/8" = 1'-0" DWN BY: KBS DATE:

REVISIONS



**KBS BUILDERS, INC.**  
 300 PARK STREET, SOUTH PARIS, ME 04281  
 PHONE: 207-739-2400 FAX: 207-739-2223



8'-0" CEILINGS  
HARVEY WINDOWS

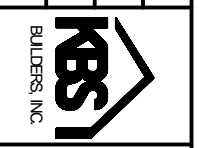
JOB NAME  
BUILDER

HOUSE TYPE  
**Hancock Cape**

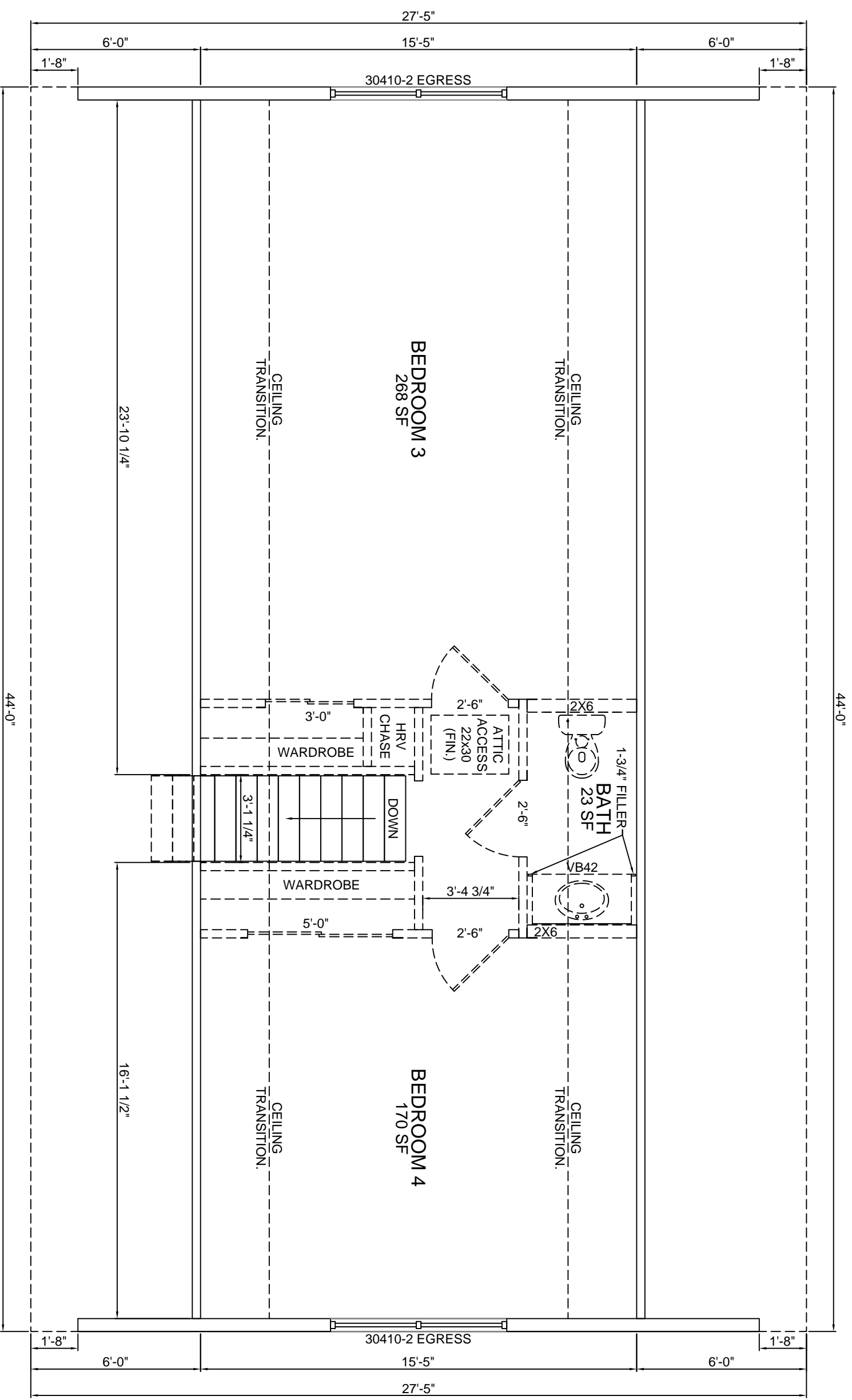
FILE NAME:  
SERIAL #:

1st FLOOR PLAN  
SHEET # P3  
SCALE: 1/4" = 1'-0"  
DWN BY: KBS  
DATE:

REVISIONS

**KBS BUILDERS, INC.**  
300 PARK STREET, SOUTH PARIS, ME 04281  
PHONE: 207-739-2400 FAX: 207-739-2223



HARVEY WINDOWS

8'-0" CEILINGS

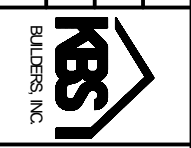
JOB NAME

BUILDER

HOUSE TYPE  
**Hancock Cape**

2nd FLOOR PLAN  
 SHEET # P4  
 SCALE: 1/4" = 1'-0"  
 DWN BY: KBS  
 DATE:

REVISIONS

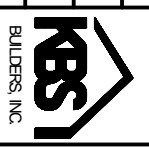



**KBS BUILDERS, INC.**  
 300 PARK STREET, SOUTH PARIS, ME 04281  
 PHONE: 207-739-2400 FAX: 207-739-2223

FILE NAME:  
 SERIAL #:

2nd FLOOR PLAN

REVISIONS



**KBS BUILDERS, INC.**  
 300 PARK STREET, SOUTH PARIS, ME 04281  
 PHONE: 207-739-2400 FAX: 207-739-2223